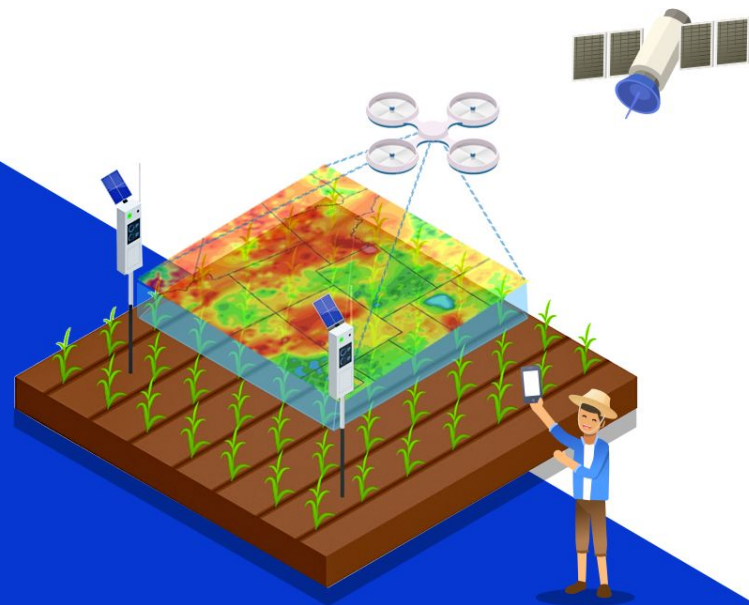




Climate SA

Sep 2, 2020



Awards



★ **ML/AI API for Plant Genomic Selection**
Granted by Japanese Government

★ **Food Bowl Program powered by GROW**

rassar@listenfield.com

Hello!

I am Noon

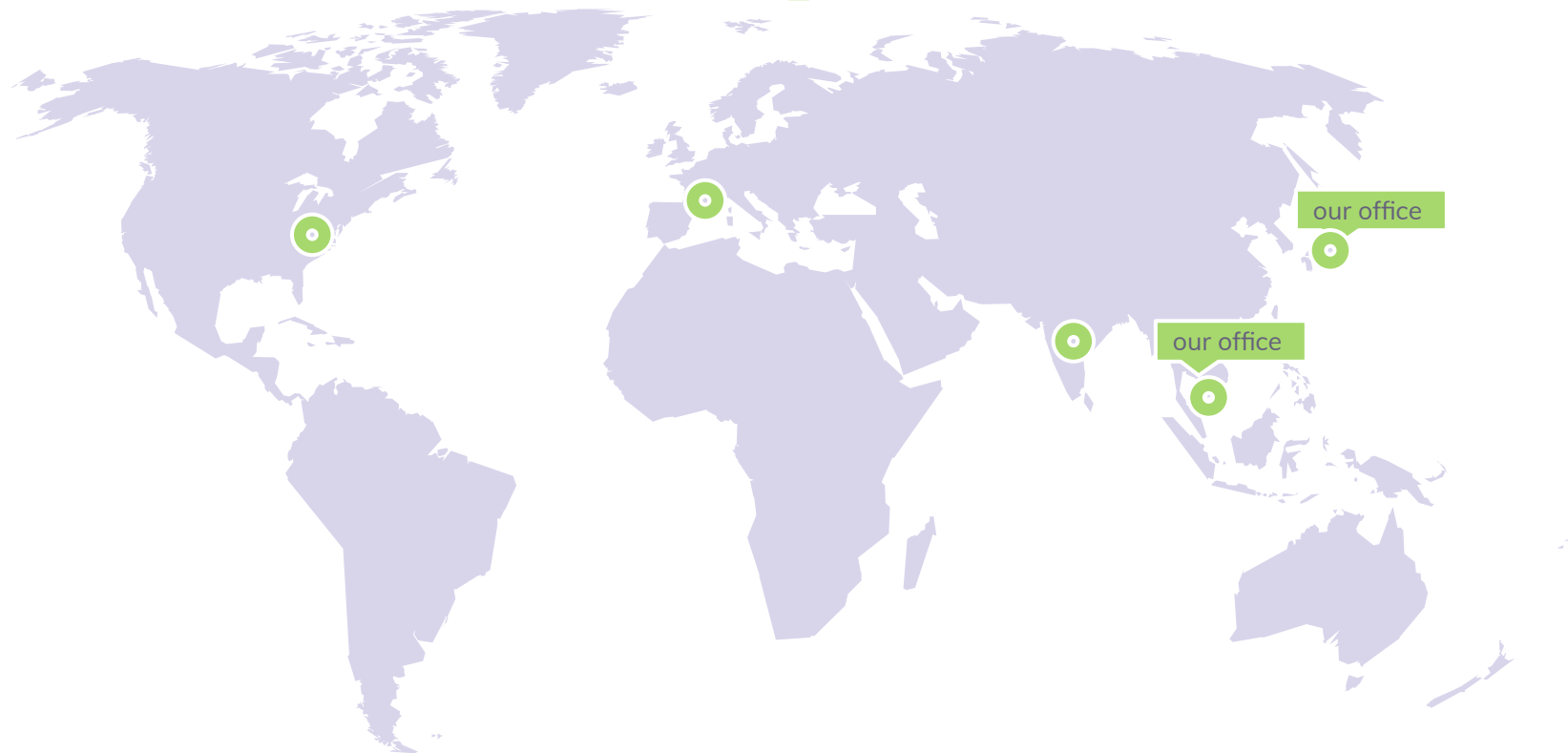
Rassarin Chinnachodteeranun

CEO of ListenField JP/TH

You can find me on
LinkedIn and Facebook



ListenField Map





**CLIMATE
CHANGE**

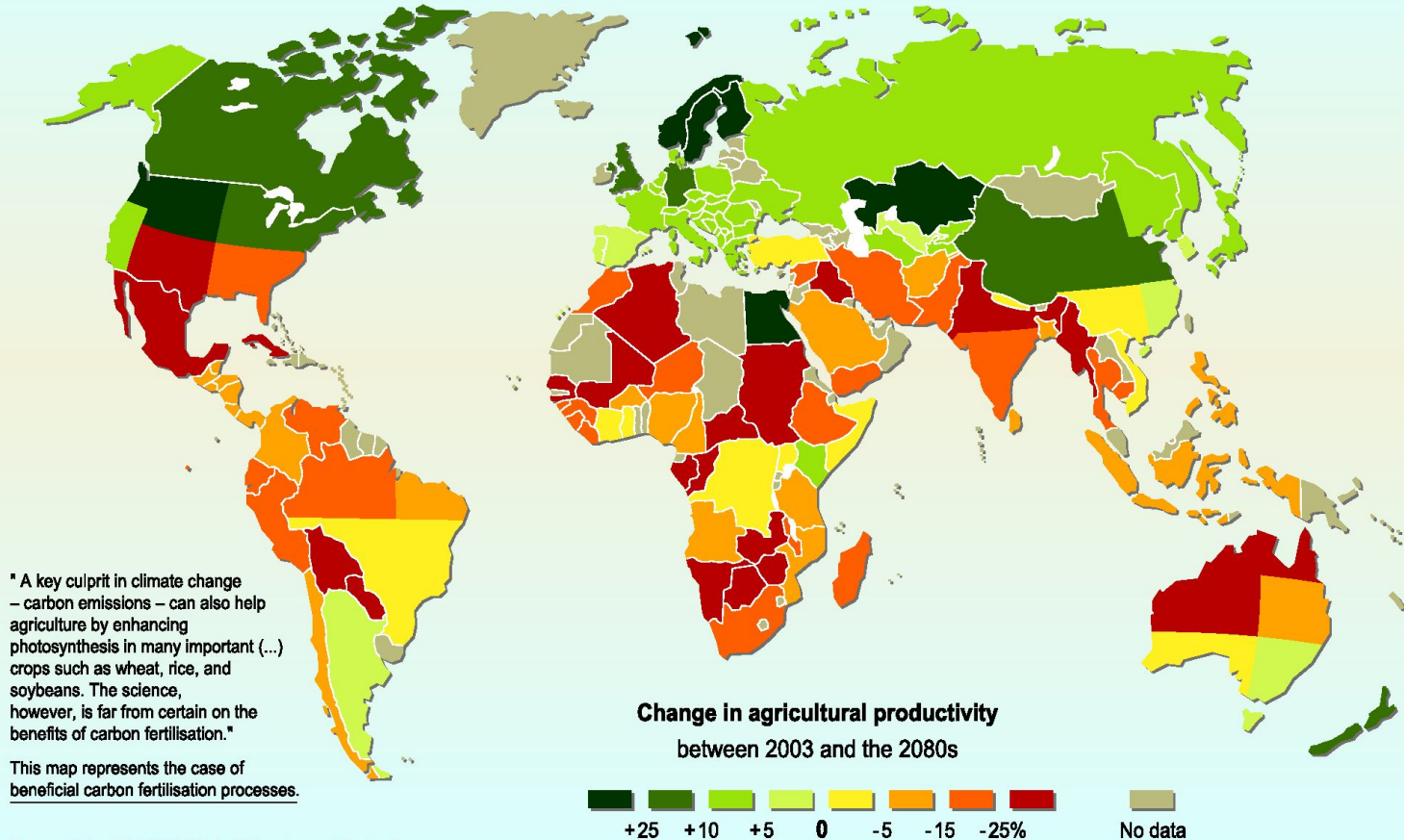


**FOOD
SECURITY**



**UNSTABLE
INCOME**

Projected impact of climate change on agricultural yields



" A key culprit in climate change – carbon emissions – can also help agriculture by enhancing photosynthesis in many important (...) crops such as wheat, rice, and soybeans. The science, however, is far from certain on the benefits of carbon fertilisation."

This map represents the case of beneficial carbon fertilisation processes.

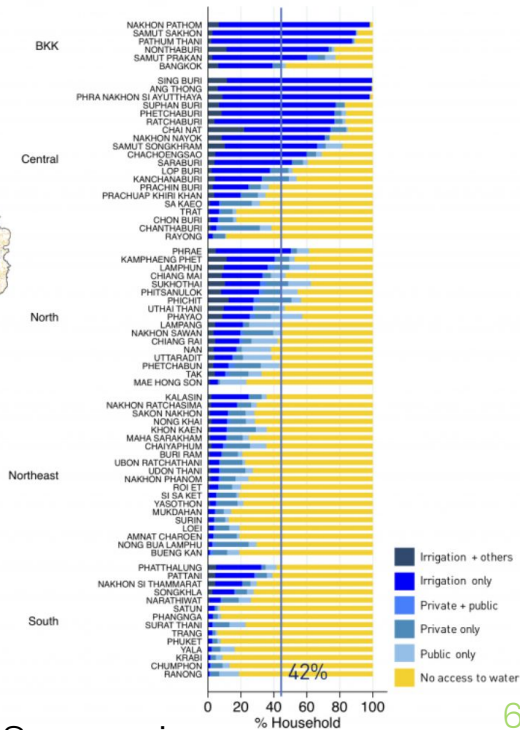
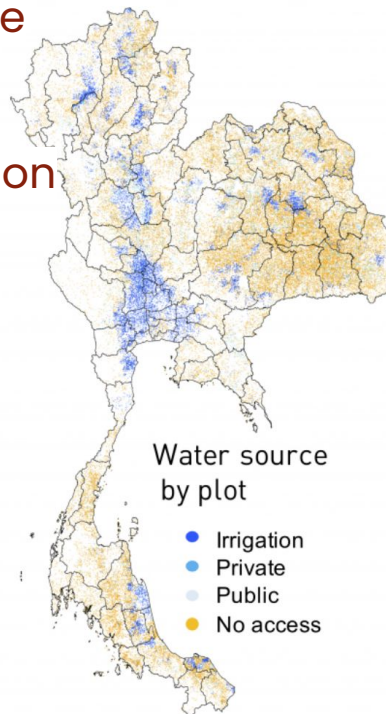
Source: Cline W., 2007, *Global Warming and Agriculture*.

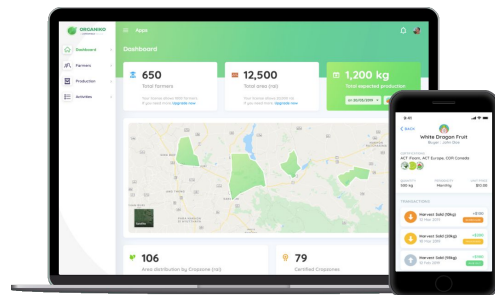


More than 70% of farmers in Thailand are farming in non-irrigated areas.

Only the blue area has access to irrigation facilities. The rest is non-irrigated.

Farmers' lives and their productivity **are easily influenced by weather variability**





Actionable Insight platform for farmers and stakeholders



Field IoT
Engine



Weather
Engine



Crop
Engine



Sky
Engine



Image
Engine



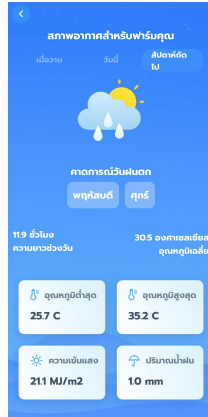
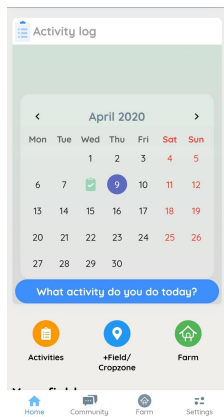
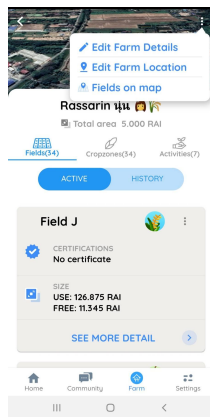
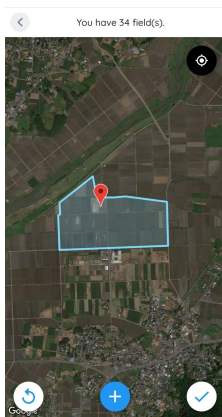
Genomic
Selection



Patent: PCT/JP2018/93 has been published by WIPO

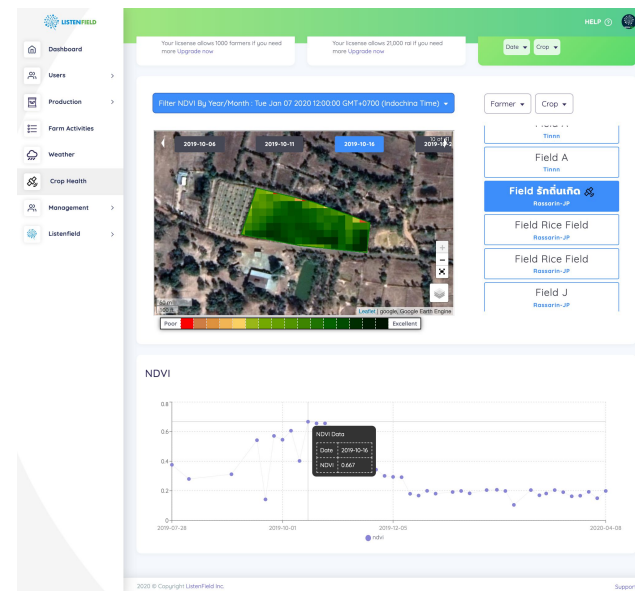
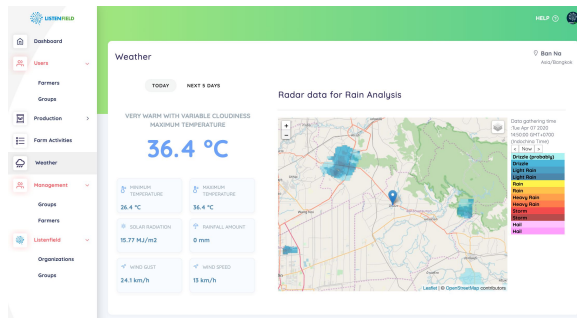
FarmAI for farmers

Digitize farm data
Manage farming groups
Connect production chain



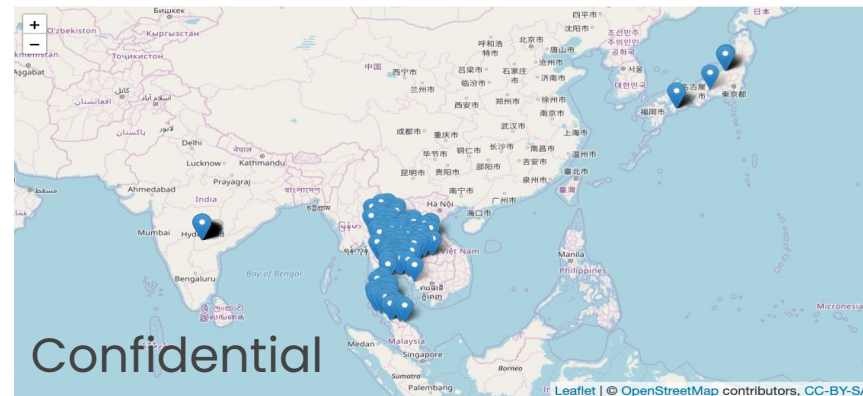
Farming Communities

Operation Dashboard for organizations to work with farmers and communities effectively

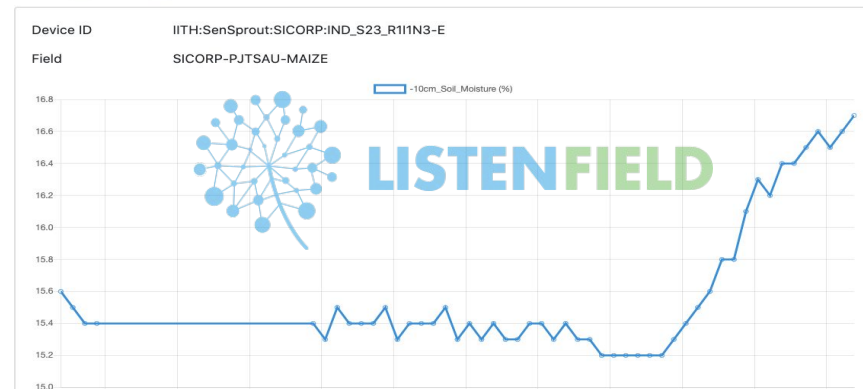


AI to enhance Weather Data

Short-Term
Seasonal
Long-Term



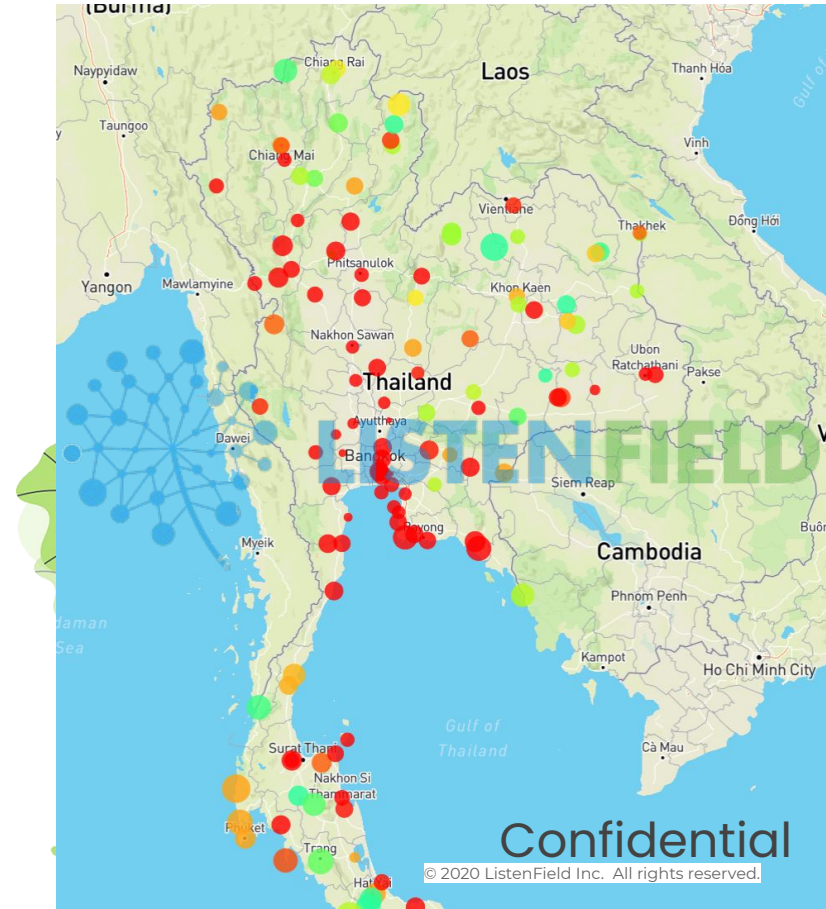
IND_S23_R11N3-E



Understand impact

- **Risk analysis**
 - Drought
 - Dryspell
 - Soil Water availability

Field level and country level



Confidential

Workshop with our farmers

Agri-Institut



ListenField

Hillkoff

Ubon Farming
Community

PGS Lumpun
Community

Benefit to Farmers

- System to work as community
- Effective farm management
- Data to understand the impact



**“Innovation & Collaboration is
NEED to create
Trusted actionable data”**

**Sustainable food production
Environmental friendly
Farmers' wellbeing**



LISTENFIELD THANK YOU

rassar@listenfield.com



THE GLOBAL GOALS
For Sustainable Development

13

CLIMATE
ACTION



9

INDUSTRY, INNOVATION
AND INFRASTRUCTURE



2

ZERO
HUNGER

